

TexSpray GTX™ 2000

US Patents D502,532; 7,114,664

309915 rev.D

- For Water-Based Materials Only -

Model: 248082

Sprayer with Graco Trigger Gun

120 psi (8.27 bar) Maximum Working Air Pressure

120 psi (8.27 bar) Maximum Working Fluid Pressure

Model: 248083

Sprayer with Graco Flex Gun

120 psi (8.27 bar) Maximum Working Pressure

120 psi (8.27 bar) Maximum Working Fluid Pressure

Model: 248084

Sprayer with Graco Pole Gun

120 psi (8.27 bar) Maximum Working Pressure

120 psi (8.27 bar) Maximum Working Fluid Pressure



Read all warnings and instructions.



[308479](#)

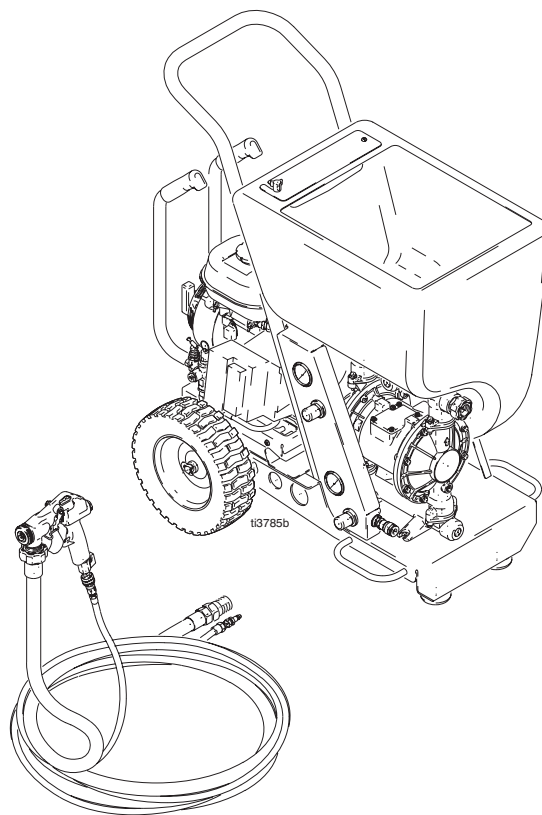


[310616](#) model 248082

[308603](#) model 248083 and 248084




[309916](#)



PROVEN QUALITY. LEADING TECHNOLOGY.





The following Warnings are for the safe setup, use, grounding, maintenance and repair of this equipment. The exclamation point symbol alerts you to a general warning and the hazard symbols refer to procedure-specific risks. Refer back to these Warnings.






Warning

 WARNING
This symbol alerts you to the possibility of serious injury or death if you do not follow the instructions.

Caution

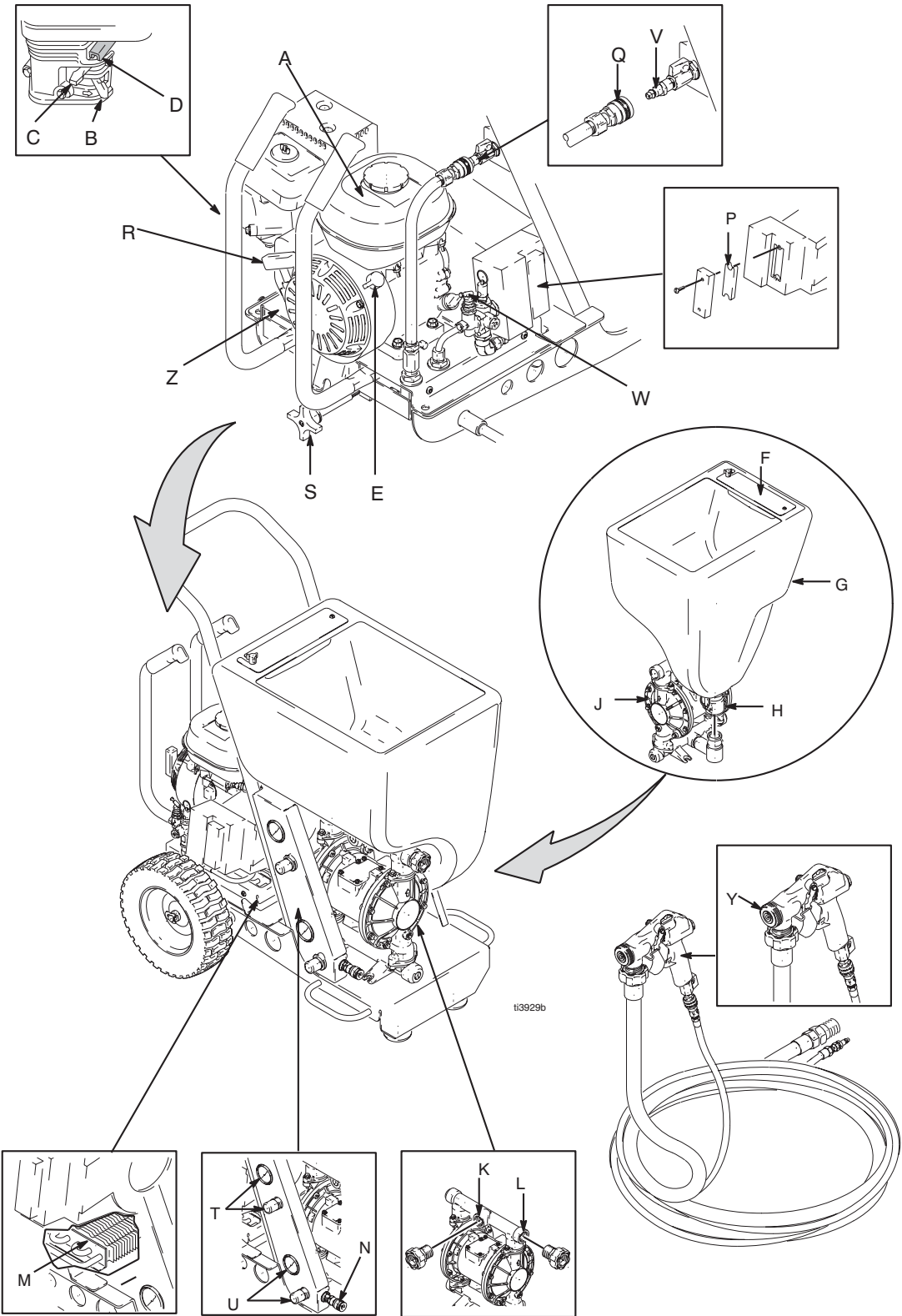
CAUTION
Alerts you to the possibility of damage or destruction of equipment if you do not follow the instructions.

 Warnings	
	Fire and Explosion Hazard Flammable fumes, such as solvent and paint fumes, in work area can ignite or explode. To help prevent fire and explosion: <ul style="list-style-type: none"> • Use equipment in well ventilated areas only. • Do not fill fuel tank while motor is running or hot; shut off motor and let it cool. Fuel is flammable and can ignite or explode if spilled on hot surface. • Eliminate all ignition sources; such as pilot lights, cigarettes, portable electrical lamps, and plastic drop cloths (potential static arc). • Keep work area free of debris, including solvent, rags, and gasoline. • Do not plug or unplug power cords or turn lights on or off when flammable fumes are present.
	Carbon Monoxide Hazard Exhaust contains poisonous carbon monoxide, which is colorless and odorless. Breathing carbon monoxide can cause death. Do not operate in an enclosed area.
	Equipment Misuse Hazard Equipment misuse can cause death or serious injury. <ul style="list-style-type: none"> • Do not exceed maximum working pressure or temperature rating of lowest rated system component. See Technical Data, in all equipment manuals. • Use fluids and solvents that are compatible with equipment wetted parts. See Technical Data in all equipment manuals. Read fluid and solvent manufacturer's warnings. • Check equipment daily. Repair or replace worn or damaged parts immediately. • Do not alter or modify this equipment. • Use the equipment only for its intended purpose. Call your Graco distributor for information. • For professional use only. • Route hoses away from traffic areas, sharp edges, moving parts and hot surfaces. • Do not use hoses to pull equipment. • Comply with all applicable safety regulations.

	WARNINGS
	<p>Burn Hazard</p> <p>Equipment surfaces and fluid that is heated can become very hot during operation. To avoid severe burns, do not touch hot fluid or equipment. Wait until equipment/fluid has cooled completely.</p>
	<p>Pressurized Equipment Hazard</p> <p>Compressed air can inject in skin. Air tubing rupture can cause injury if disconnected while under pressure. To reduce risk of injury:</p> <ul style="list-style-type: none"> • Never exceed maximum working pressure of any attachment. • Do not direct airstream at body. • Follow Pressure Relief Procedure, page 6 whenever you are instructed to relieve pressure, stop spraying, service equipment, install or clean spray nozzle or disconnect or connect hose.
	<p>Cleaning Solvent Hazard with Plastic Parts</p> <p>Use only compatible water-based solvents to clean plastic structural or pressure-containing parts. Many solvents can degrade plastic parts to the point where they could fail. Such failure could cause serious injury or property damage. See Technical Data on page 21 of this instruction manual and in all other equipment manuals. Read fluid and solvent manufacturer's warnings.</p>
	<p>Personal Protective Equipment</p> <p>Wear appropriate protective equipment when operating, servicing or when in the operating area of this equipment to help protect yourself from serious injury, including eye injury, inhalation of toxic fumes, burns and hearing loss. This equipment includes, but is not limited to:</p> <ul style="list-style-type: none"> • protective eye wear • clothing and respirator as recommended by fluid and solvent manufacturer • hearing protection • gloves

CAUTION
<p>Water or material remaining in unit when temperatures are below freezing can damage pump and/or delay startup.</p> <p>To insure water and material are completely drained out of unit:</p> <ol style="list-style-type: none"> 1. Remove material line from sprayer. 2. Tip sprayer to allow material (water) to flow out of pump inlet. <p>Before adding material or starting unit in cold weather, run warm water through pump.</p>

Component Identification






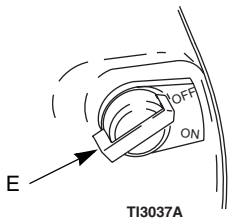
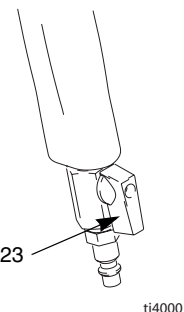
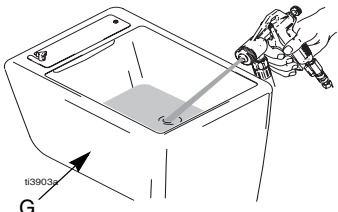
Component Identification

A	Gas Tank
B	Fuel Valve
C	Choke
D	Throttle Lever
E	Engine ON/OFF Switch
F	Nozzle Storage
G	Hopper
H	Hopper Quick Connect
J	Diaphragm Pump
K	Material Outlet Option 1
L	Material Outlet Option 2
M	Air Cooler
N	Gun Air Outlet Quick Connect
P	Air Filter (both sides)
Q	Air Line Quick Connect
R	Engine Starter Cord
S	Motor Lock Knob
T	Material (Pump) Air Pressure Gage and Control Knob
U	Gun Air Pressure Gage and Control Knob
V	Sprayer Quick Connect Air In and Air ON/OFF Valve
W	Pressure Unloader
Y	Gun (see manual 308878)*
Z	Compressor Power Pack

* Reference numbers used in gun illustrations coincide with reference numbers shown in gun manual 308878

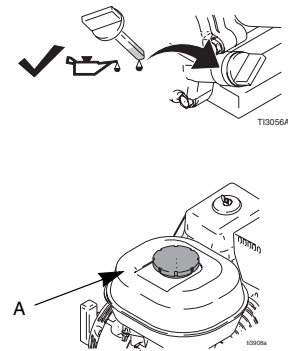
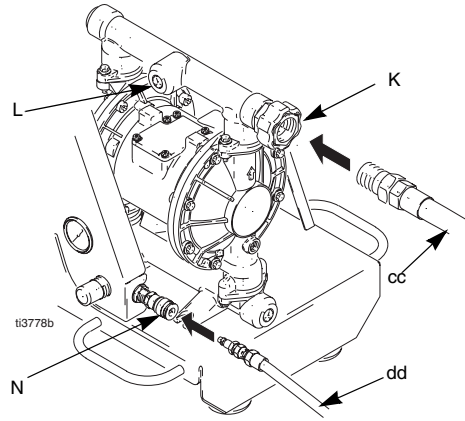
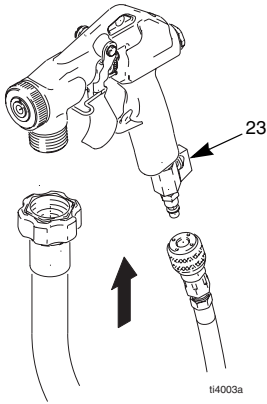
Pressure Relief Procedure

IMPORTANT	
	<p>To reduce the risk of injury, follow this Pressure Relief Procedure whenever you:</p> <ul style="list-style-type: none"> • Are instructed to relieve pressure • Stop spraying • Service equipment • Install or clean spray nozzle • Disconnect or connect hose.

 			
			
			
1 Turn Engine ON/OFF (E) switch OFF.		2 Open gun air valve (23).	
		3 Trigger gun. Spray material back into hopper (G).	

Setup

Preparation



4 Connect air and material hoses to gun. Tighten securely).

5 Connect one end of material hose (cc) to material outlet (K or L) and the other end to gun material inlet (bb).

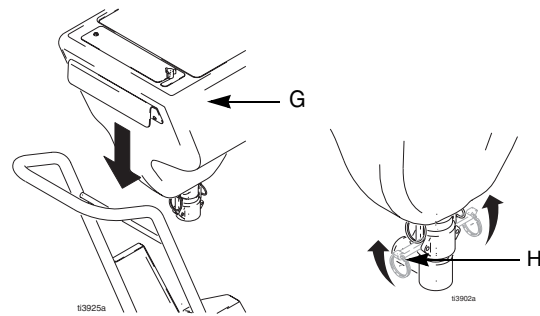
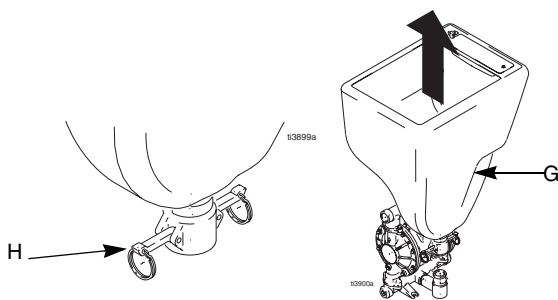
NOTE: Material plug must be installed in material outlet (K or L) you are not using.

6 Open gun air valve (23).

7 Check engine oil level. Add SAE 10W-30 (summer) or 5W-20 (winter) oil, if necessary.

8 Fill fuel tank (A) (Fueling, page 13).

Removing & Installing Hopper



Removing Hopper (G)

The hopper (G) can be removed from cart for cleaning and when using the Siphon Kit 248112, available from your Graco distributor.

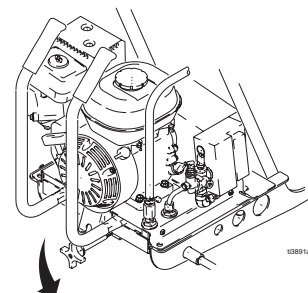
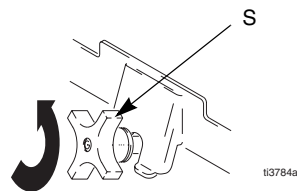
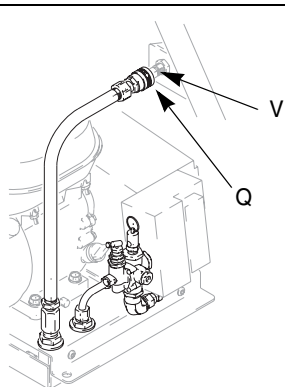
1 Push down 2 latches on each side of hopper coupler (H).
Lift hopper (G) straight up, off of unit.

Installing Hopper (G)

2 Position coupler (H) over material outlet and slide hopper (G) straight down, over the fitting as far as it will go, making sure hopper bracket is positioned over cart handle rod.

Secure latches on each side by pushing them, firmly up, into locked position.

Compressor Power Pack



Removing Compressor Power Pack (Z)

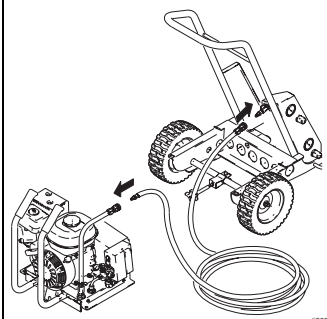
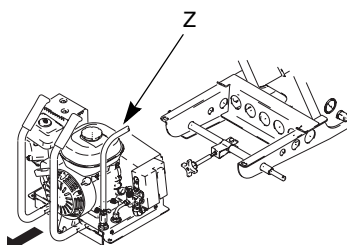
For **outdoor use**, the compressor power pack (Z) can be left on the cart.

For **indoor use**, the compressor power pack (Z) must be separated from the sprayer and placed outdoors. A longer air hose (not provided) must be used to connect the sprayer to the compressor power pack (Z). See Running Compressor Remotely, page 8.

1 Disconnect air line quick connect fitting (Q) from compressor air quick connect inlet fitting (V).

2 Loosen motor lock knob (S) by turning it counter-clockwise, relieving tension on bracket.

3 Push knob down.



CAUTION

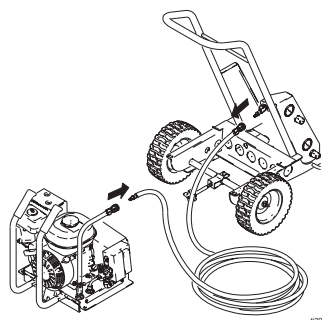
Running Compressor Remotely

4 The compressor power pack (Z) slides off the back of the cart.

Place compressor power pack on a hard, level surface where cooling air can circulate freely through cooler and a minimal amount of dirt and dust is drawn into it. Placing compressor power pack on a soft, uneven surface such as dirt, grass or sand, can plug air cooler (M), resulting in overheating and damage to motor.

1 A longer air hose (not provided) must be used to connect the sprayer to the compressor power pack (Z) when the two components are separated. (Hose Kit 248117, containing a 50 ft hose is available from your Graco distributor.)

2 Attach the longer air hose to the air line quick connect fitting (Q) and to the compressor air quick connect inlet fitting (V).



Reinstalling Compressor Power Pack (Z)

Note: For maximum performance use a 3/8 in. or 1/2 in. inside diameter hose.

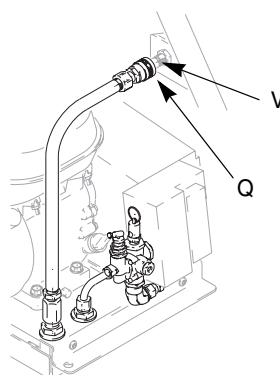
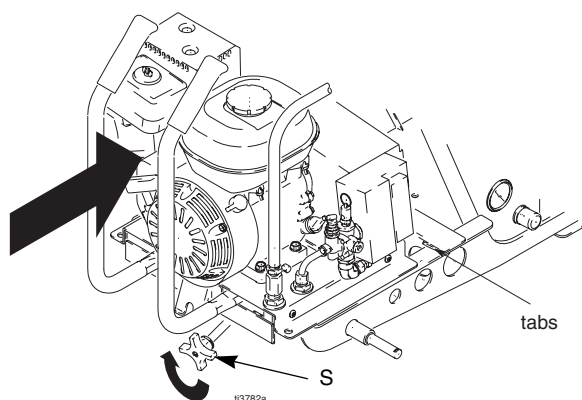
Hose must be rated for:

- 200°F (93°C) maximum temperature
- 125 psi or greater

1 Disconnect air hose from the compressor power pack quick disconnect fitting (dd) and from the cart air quick disconnect fitting (V).

2 Inspect cart and compressor power pack (Z). Remove any debris or dirt on side rails of cart and/or compressor power pack.

3 Using handles, lift compressor power pack (Z) onto cart frame.

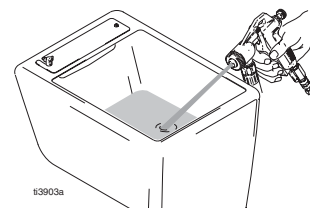
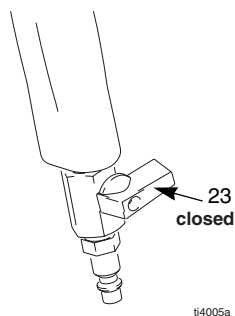
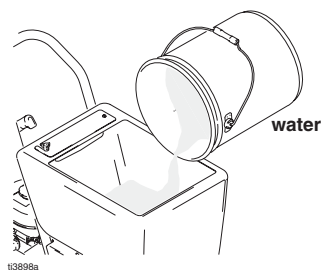


4 Push compressor power pack (Z) forward, until front edge meets tabs on cart base.

5 Lift and turn motor lock knob (S) until compressor power pack (Z) is securely attached to cart.

6 Attach air line quick connect fitting (Q) to compressor air quick connect inlet fitting (V).

Wetting Hose

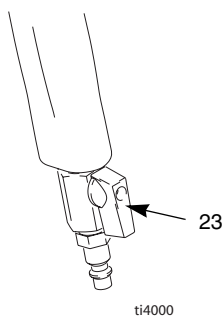


Wet inside of hose before each use to flush out sediment and prevent texture material from packing out hose.

1 Pour one (1) gallon (3.8 liters) of clean water into hopper.

2 Close gun air valve (23).

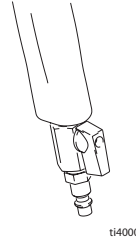
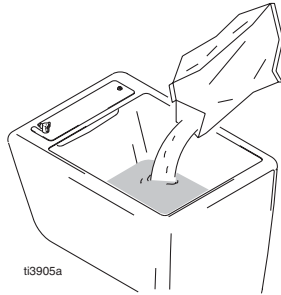
3 Start engine, page 15. Aim gun into hopper (G) and trigger gun to circulate water for a few minutes to wet inside of material hose.



4 Trigger gun into waste pail until hopper no longer contains water.

5 Open gun air valve (23) to relieve compressor air.

Wetting System



CAUTION

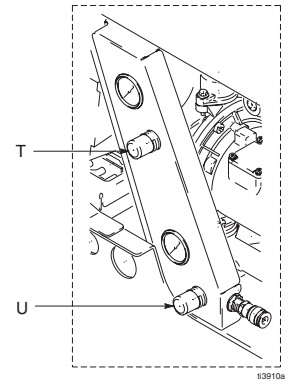
- 1 Fill hopper (G) with prepared texture material.

Do not mix material in hopper. Mixing material in hopper can damage hopper, result in an inconsistent mix and packout can occur.

CAUTION

- 2 Install tip. See Nozzle Selection Chart, page page 16.
- 3 Open gun air valve (23) to relieve air pressure.

Do not allow material to flow out of gun when air valve (23) is closed or material packout in needle can occur.



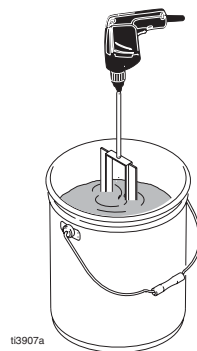
NOTE: If spraying a simulated acoustic and coarse aggregate material, disconnect hose at gun, prime pump and hose and circulate material back into hopper for 10 seconds. Turn off pump. Install gun and tip.

- 4 Inspect hose for kinks which could restrict fluid flow.
- 5 Trigger gun into a pail. When texture material appears at tip, move gun to hopper and circulate until there is a solid stream of texture material.

- 6 See System Adjustment, page 17 for proper spray pattern and pump and gun adjustments.

- 7 On the sprayer, adjust gun air pressure (U) and pump air pressure (T) to achieve desired results.

Mixing Material



CAUTION

Do not use any solvent-based materials.

Use water-based materials only.

Proper material mixture is essential. The pump will not operate if material is too thick.

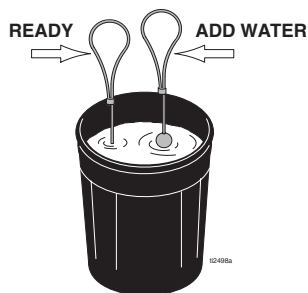
NOTE: For best results, mix material in a separate container and pour it into hopper.

- 1 Slowly add one bag of texture to clean water as instructed on bag.

For best results do not use partial bags.

- 2 Agitate to a smooth, lump-free consistency.

- 3 After texture material is thoroughly mixed, gently set ball end of Material Thickness Gauge on surface of mixture.


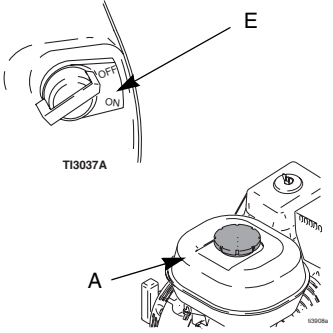
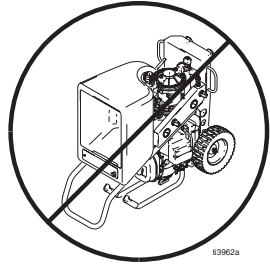



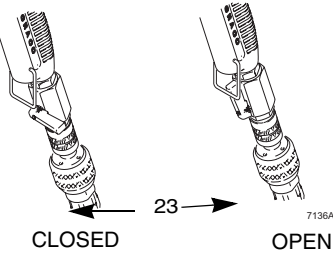
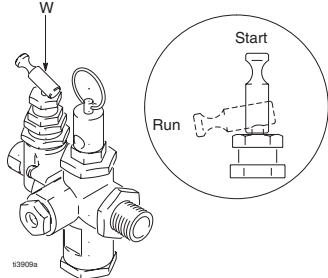
NOTE: For an accurate test, be sure gauge is completely dry and clean every time it is used.

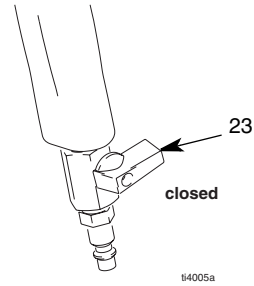
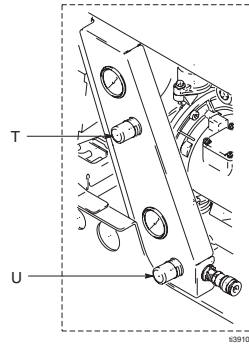
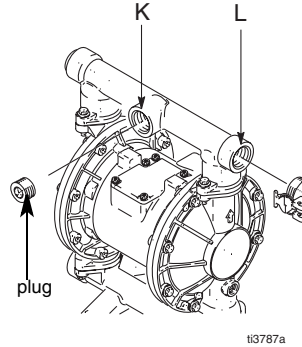
- 4 Observe ball on the material. When the material is thin enough to spray, the ball will sink completely into the mixture.

- 5 If the ball does not sink completely into the mixture within 10 seconds, add more water, agitate and try again.

NOTE: Thicker materials that do not pass the Material Thickness Gauge test, can be used. Before spraying thicker materials test pump performance first. If the material is too thick you will not achieve good results.

Fueling 			
Fuel Specifications <ul style="list-style-type: none"> Use automotive gasoline with a pump octane number of 86 or higher. If engine knocks or pings, use a higher octane fuel. Unleaded fuel minimizes combustion chamber deposits. If using gasohol, it may contain no more than 5% methanol, <u>and</u> must have methanol cosolvents and corrosion inhibitors. <p>NOTE: The HONDA engine warranty does not cover damage resulting from the use of gasoline containing alcohol.</p> <ul style="list-style-type: none"> Do not use oil and gasoline mixtures or contaminated gasoline. 	Refueling Procedure <ol style="list-style-type: none"> Shut OFF engine. Remove fuel tank cover. In a well ventilated area, add unleaded automotive gasoline to fuel tank. Leave 1/2 (13 mm) at top of tank for gasoline expansion. <p>NOTE: Tank capacity is 0.95 gallon (3.6 liter).</p> <p>Do not smoke or allow flames or sparks in area where engine is refueled or where gasoline is stored.</p>	<ol style="list-style-type: none"> Tighten fuel cap firmly. <p>Fuel vapor or spilled fuel can ignite. If any fuel is spilled, make sure are dry before starting engine.</p>	CAUTION <ul style="list-style-type: none"> Close black fuel shutoff lever whenever you are transporting sprayer to prevent fuel from flooding engine. Keep sprayer upright and level when operating and when transporting. This prevents crankcase oil from leaking into combustion chamber, which makes start up very difficult.

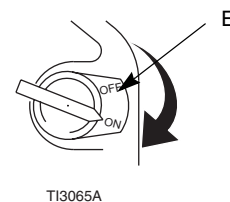
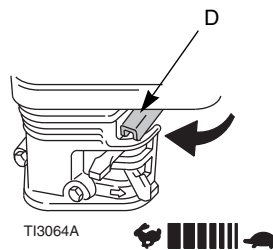
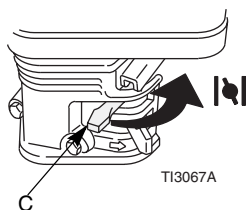
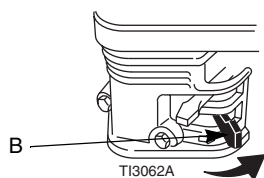
Operation Characteristics 			
CAUTION <p>Always start system with compressor air relieved. See Pressure Relief Procedure, page 6.</p>	<ul style="list-style-type: none"> Air bleeds from gun nozzle when gun valve (23) is open. Close air valve (23) to stop air when priming system. See System Adjustment, page 17, for more gun characteristics. 	<p>Before pulling engine starter rope (R), pressure unloader valve (W) must be moved up to START position. Move valve down to RUN position after motor has started.</p>	CAUTION <p>Allow engine to cool a minimum of 10 minutes or use an insulating glove, before disconnecting air lines or attempting to restart.</p>



- | | | |
|--|---|--|
| <ul style="list-style-type: none"> • Always have material outlet plug installed in opening (K or L) that you are not using when there is material in hopper. If plug is removed, hopper will drain out. • also
Always have material hose installed in the opening (K or L) when there is material in hopper. If hose is removed, hopper will drain out through pump. | <ul style="list-style-type: none"> • Compressor air pressure is controlled with the pressure control knob (T) and displayed on gage. | <ul style="list-style-type: none"> • Gun air pressure is regulated using air pressure control on sprayer (U) as well as gun air valve located on gun handle (23). The site gage on sprayer enables duplication of air pressure setting. The gun air valve (23) allows for additional air pressure adjustment. |
|--|---|--|

Startup

Starting Gas Engine

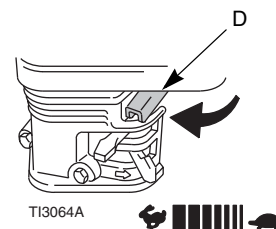
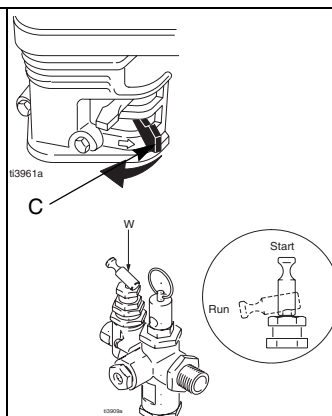
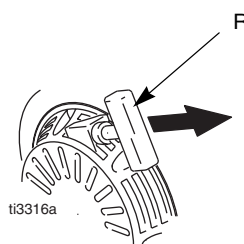
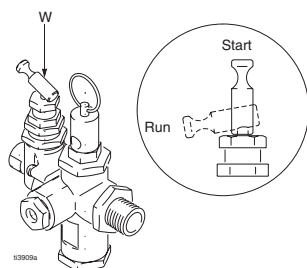


1 Move fuel valve (B) to open

2 Move choke (C) to closed

3 Set throttle (D) to fast

4 Set engine (E) switch ON



5 Flip up pressure unloader valve (W) to START position.


6 Pull starter cord (R).

7 After motor starts, move choke (C) to open and pressure unloader (W) down, to RUN position.

8 Set throttle (D) to desired setting.

Spray Techniques




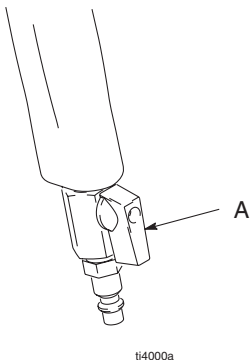
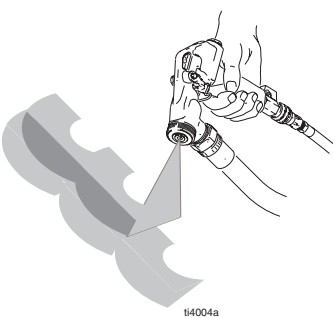
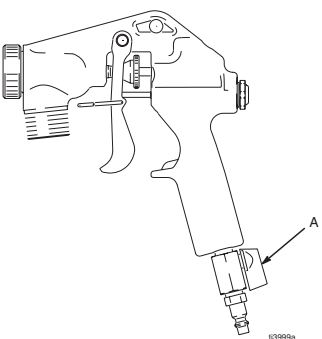
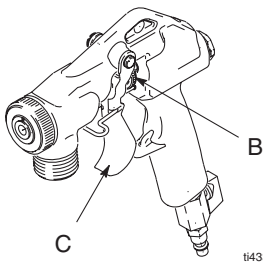
Nozzle Selection


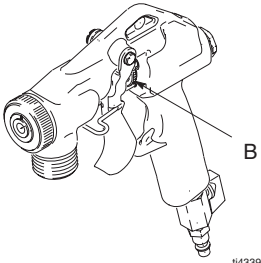
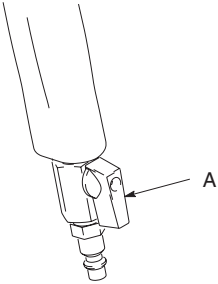
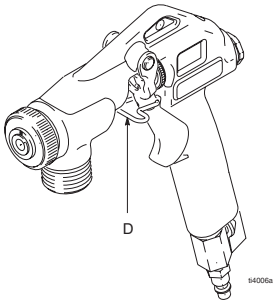
	IMPORTANT
	Keep pump and hose clean when switching between simulated acoustic, knockdown and orange peel applications. A dirty pump can release particles of texture into the finish.

Nozzle Selection			
Application	Nozzle Orifice ²	Nozzle No.	Air Volume ¹
Fog	1/8 in.	3	high
Simulated Acoustic	3/16 in. (fine)	4	medium to high
	1/4 in. (fine to med)	6	
	5/16 in. (coarse)	8	
Orange Peel	1/8 to 3/16 in.	3-4	medium to high
Splatter Coat	1/4 to 5/16 in.	6-8	low - medium
Knock-down	5/16 in.	8	low

¹ Control air volume with gun air flow valve (31).

²For more material volume, try a larger-orifice tip.

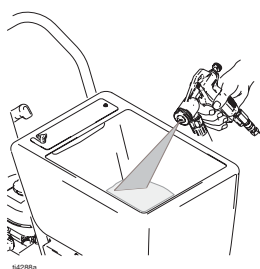
<div> System Adjustment <div>    </div> </div>			
	 <p>ti4000a</p>	 <p>ti4004a</p>	 <p>ti3999a</p>
	<p>1 Open air valve (A).</p>	<p>2 Test spray pattern on cardboard. Hold gun 18 to 30 in. (457 to 762 mm) from surface. Use this spray distance for most applications. Overlap each stroke 50% in a circular motion.</p>	<p>3 Adjust air valve (A) to achieve uniform, round spray pattern. It may be necessary to change spray nozzle to achieve desired spray pattern.</p> <p>NOTE: Keep a small amount of air flowing through air line and gun tip to prevent material from backing up needle</p>
	 <p>ti4338a</p>		
<p>4 To select correct nozzle for your applications, consider size of aggregate in material and coarseness of spray pattern. Remember the larger the nozzle, the larger the pattern. See Nozzle Selection, page 16.</p> <ul style="list-style-type: none"> More air produces a finer finish, less air a coarser finish. 	<p>When adjusting flow adjustment nut (B), release trigger (C), then adjust.</p> <p>If adjusting while triggered, needle will turn but provide no adjustment.</p> <p>If flow adjustment nut will not turn, check to see if it is:</p> <ul style="list-style-type: none"> set to maximum adjustment, or if there is material on threads. Clean threads as needed. 	<p>Check material consistency often. Material may thicken as it sits and slow down production or affect spray pattern. Thin with water as needed to maintain proper consistency.</p>	

  <p>ti4339a</p>	 <p>ti4000a</p>		 <p>ti4000a</p>
Material Flow Adjustment	Air Flow Adjustment	Preventing Material Surge at Gun Trigger	For Continuous Spraying
<ul style="list-style-type: none"> For a lighter spray pattern, decrease material pressure at sprayer. For a heavier spray pattern, increase material pressure at sprayer. 	<ul style="list-style-type: none"> Trigger gun. To decrease air flow, close air valve (A) (clockwise). To increase air flow, open air valve (A) (counter-clockwise). <p>NOTE: Keep a small amount of air flowing through air line and gun tip to prevent material from backing up needle</p>	<p>Pressure will build up in system when you stop triggering gun. To prevent material surge at beginning of spray pattern,</p> <ul style="list-style-type: none"> when you first pull trigger, point gun away from surface you are spraying. hold gun away from surface and gradually work your way closer to it. trigger gun as little as possible 	<ul style="list-style-type: none"> Engage trigger lock (D) to hold trigger open and reduce fatigue.

Compressor Power Pack Performance			
<ul style="list-style-type: none"> .Reduce engine RPM (throttle). Running the engine slower will reduce pressure surging, heat and noise. 	<ul style="list-style-type: none"> The pressure unloader, unloads less frequently, if the engine RPM (throttle) is set lower. 		

Shutdown and Cleanup

CAUTION	
English	
<ul style="list-style-type: none"> • Turn off sprayer if you are going to stop spraying for 5 minutes or longer. • Before removing material hose relieve pressure and material is not in hose. • To keep sprayer in good operating condition, always clean it thoroughly and prepare it properly for storage. • If water freezes in sprayer, damage may occur. In cold weather store sprayer where it will not freeze. 	



When you have finished spraying:

1 Relieve Pressure , page 6.	3 Spray inside material hopper to circulate water through gun and hose. While circulating water, use gun to clean material hopper.	Spray water into waste bucket to empty material hopper. NOTE: A soft brush can be used to loosen dried on material	4 Follow Pressure Relief , page 6.
2 Fill material hopper with 2-4 gallons of clean water.			

Maintenance

Component	Task	Frequency
Engine	Check Oil	Daily
Hoses	Check for wear and/or damage	Daily
	Drain system of all water	After each use
Air and Material Hose Connections	Add a few drops of light oil	After each days use
Diaphragm Pump	Lubricate	Remove hose from pump air inlet and add 2 drops of machine oil to air inlet after every 500 hours of operation (or monthly).
	Flush	Before storing
	Thread Connections	Before each use check to make sure all connections are tight and leak free
		Every two months, retorque all threaded connections
Compressor Air Filter	Clean	Monthly
Unloader Muffler	Clean	Monthly
Gun	Clean	After each use
	Add a few drops of light oil to flow adjustment	After each use

Technical Data

Maximum working air pressure	120 psi (8.27 bar)
Maximum working fluid pressure	120 psi (8.27 bar)
Air pressure operating range	25 to 120 psi (1.7 to 8.27 bar)
Compressor specifications	Oilless compressor
Air Displacement	24 CFM (680 lpm)
Air Delivery	12 CFM @ 100 psi (340 lpm @ 6.9 bar)
Engine	5.5 HP Honda OHV
Gas capacity	0.95 US gallons (3.6 liters)
Oil capacity	0.63 US quarts (0.60 liters)
Hopper capacity	17 US gallons (64 liters)
Maximum deliver with texture material	4.0 gpm (15.14 lpm)
Dimensions	
Length	38 in. (965 mm) with handles
Width	24 in. (610 mm)
Height	40 in. (1016 mm)
Weight	
With hoses or gun	185 lb (83.91 kg)
Without hoses and gun	165 lb (74.84 kg)
Without hoses and gun and compressor power pack	90 lb (40.82 kg)
Compressor power pack only	75 lb (34.02 kg)
Wetted parts	PVC, zinc plate CS, Buna-N, aluminum, brass, polyethylene, SST, UHMW, Delrin
Sound data	
Sound pressure level*	92 db(A)
Sound power level#	106.3 db(A)

*Measured while spraying at 1 m.

#Measured per ISO-3744

Warranty

Graco warrants all equipment referenced in this document which is manufactured by Graco and bearing its name to be free from defects in material and workmanship on the date of sale to the original purchaser for use. With the exception of any special, extended, or limited warranty published by Graco, Graco will, for a period of twelve months from the date of sale, repair or replace any part of the equipment determined by Graco to be defective. This warranty applies only when the equipment is installed, operated and maintained in accordance with Graco's written recommendations.

This warranty does not cover, and Graco shall not be liable for general wear and tear, or any malfunction, damage or wear caused by faulty installation, misapplication, abrasion, corrosion, inadequate or improper maintenance, negligence, accident, tampering, or substitution of non-Graco component parts. Nor shall Graco be liable for malfunction, damage or wear caused by the incompatibility of Graco equipment with structures, accessories, equipment or materials not supplied by Graco, or the improper design, manufacture, installation, operation or maintenance of structures, accessories, equipment or materials not supplied by Graco.

This warranty is conditioned upon the prepaid return of the equipment claimed to be defective to an authorized Graco distributor for verification of the claimed defect. If the claimed defect is verified, Graco will repair or replace free of charge any defective parts. The equipment will be returned to the original purchaser transportation prepaid. If inspection of the equipment does not disclose any defect in material or workmanship, repairs will be made at a reasonable charge, which charges may include the costs of parts, labor, and transportation.

THIS WARRANTY IS EXCLUSIVE, AND IS IN LIEU OF ANY OTHER WARRANTIES, EXPRESS OR IMPLIED, INCLUDING BUT NOT LIMITED TO WARRANTY OF MERCHANTABILITY OR WARRANTY OF FITNESS FOR A PARTICULAR PURPOSE.

Graco's sole obligation and buyer's sole remedy for any breach of warranty shall be as set forth above. The buyer agrees that no other remedy (including, but not limited to, incidental or consequential damages for lost profits, lost sales, injury to person or property, or any other incidental or consequential loss) shall be available. Any action for breach of warranty must be brought within two (2) years of the date of sale.

GRACO MAKES NO WARRANTY, AND DISCLAIMS ALL IMPLIED WARRANTIES OF MERCHANTABILITY AND FITNESS FOR A PARTICULAR PURPOSE, IN CONNECTION WITH ACCESSORIES, EQUIPMENT, MATERIALS OR COMPONENTS SOLD BUT NOT MANUFACTURED BY GRACO. These items sold, but not manufactured by Graco (such as electric motors, switches, hose, etc.), are subject to the warranty, if any, of their manufacturer. Graco will provide purchaser with reasonable assistance in making any claim for breach of these warranties.

In no event will Graco be liable for indirect, incidental, special or consequential damages resulting from Graco supplying equipment hereunder, or the furnishing, performance, or use of any products or other goods sold hereto, whether due to a breach of contract, breach of warranty, the negligence of Graco, or otherwise.

ADDITIONAL WARRANTY COVERAGE

Graco does provide extended warranty and wear warranty for products described in the "Graco Contractor Equipment Warranty Program".

TO PLACE AN ORDER, contact your Graco distributor, or call **1-800-690-2894** to identify the nearest distributor.

All written and visual data contained in this document reflects the latest product information available at the time of publication. Graco reserves the right to make changes at any time without notice.

MM 309915

This manual contains English

Graco Headquarters: Minneapolis

International Offices: Belgium, Korea, China, Japan

GRACO INC. P.O. BOX 1441 MINNEAPOLIS, MN 55440-1441

<http://www.graco.com>

Written in USA 10/2003, Rev 10/2006