

AC Power Supply

310675 Rev.A

Installing this kit on ProMix™ Easy and Xtreme Mix™ 185 Proportioners changes them to non-intrinsically safe units

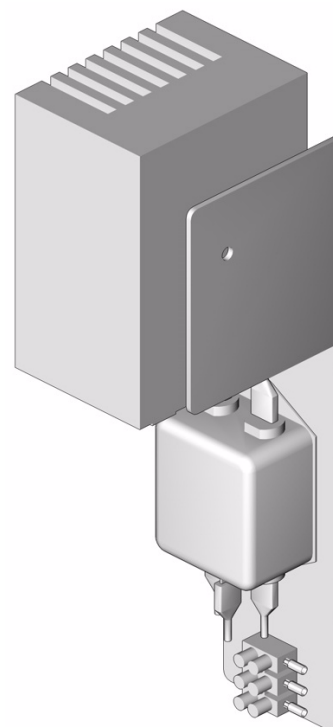
Part No. 248398



WARNING




Installing this kit requires access to parts which may cause electric shock or other serious injury if work is not performed properly. Read warnings in ProMix Easy repair manual 309909 or Xtreme Mix 185 repair manual 310666. Be sure to shut off all power to the equipment before repairing.



TI5114a

Installation

⚠ WARNING



Installing this kit requires access to parts which may cause electric shock or other serious injury if work is not performed properly. Read warnings in ProMix Easy repair manual 309909 or Xtreme Mix 185 repair manual 310666. Be sure to shut off all power to the equipment before repairing.

1. Close main air shutoff valve on air supply line and on proportioner.
2. Remove side panels (A). See FIG. 1.
3. Remove fasteners (B). Gently pull user interface (C) away from pneumatic control (D).

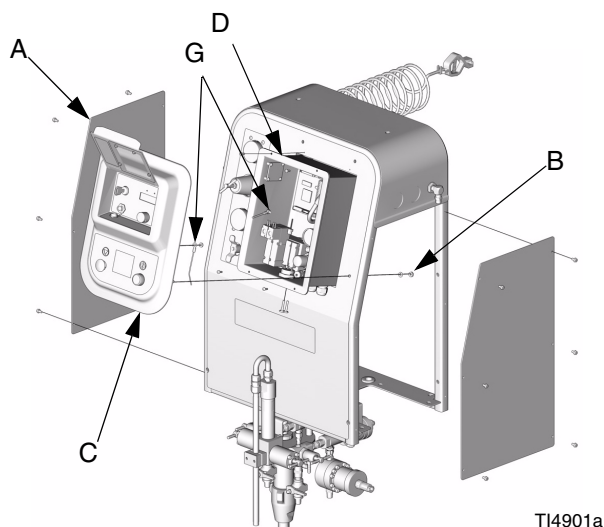


FIG. 1

4. To completely remove user interface (C), disconnect ground wire (G), and wires from J1 and J2 on main control board (E). See FIG. 2.

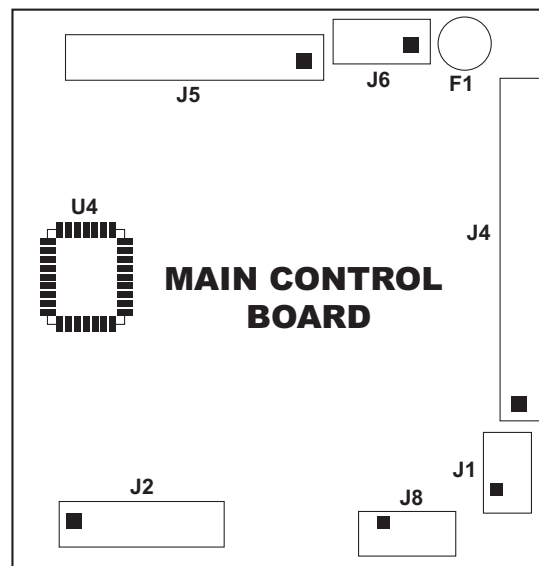


FIG. 2

5. Disconnect power supply wires (P) from J6 on main control board (E). See FIG. 3.
6. Disconnect two air lines (H) from alternator (K).

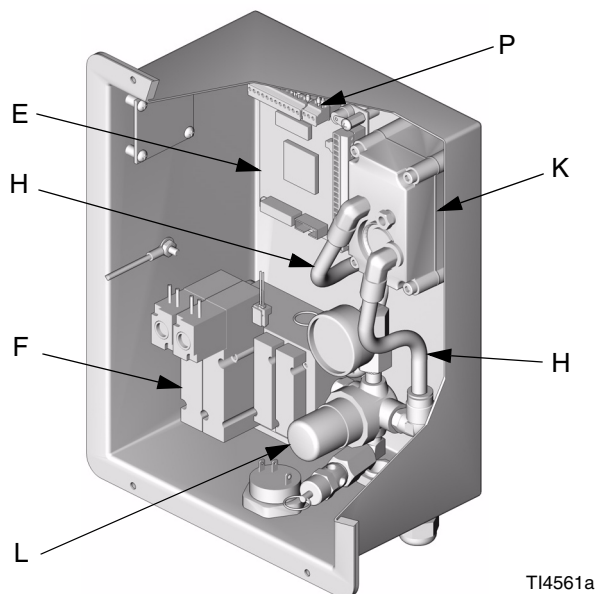


FIG. 3

7. Remove top nut and loosen bottom nut. Slide alternator (K) up and off bottom nut.
8. To remove solenoid module (F), remove two screws from back of control box. Disconnect air supply line to solenoid module. Remove the module only enough to remove the air regulator (L) and attached parts from the middle port of the solenoid module. Also remove the elbow from the top port of the module.
9. Install two plugs (5) in the top and middle ports of the solenoid module (F). Reinstall the solenoid module in the control box. See FIG. 4.

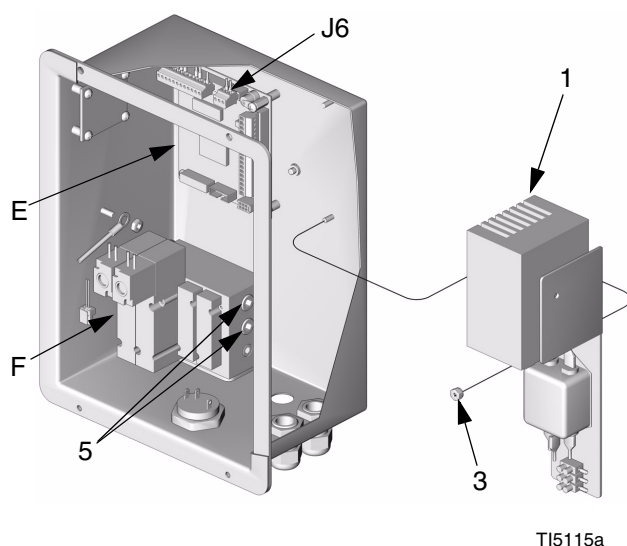


FIG. 4

10. Install the AC power supply (1) and tighten it with the nut (3).
11. Connect power supply wire harness (4) to J6 on main control board (E).

⚠ WARNING



Installing this equipment requires access to parts which may cause electric shock or other serious injury if work is not performed properly. Have a qualified electrician connect power and ground to main power switch terminals. Read warnings in ProMix Easy repair manual 309909 or Xtreme Mix 185 repair manual 310666. Be sure your installation complies with all National, State, and Local safety and fire codes.



Non-intrinsically safe units must be hardwired or supplied with a power cord (not included). Power cord must be compatible to your local power configuration. Wire gauge size must be 14 AWG.



Non-IS units operate with 93-250 Vac, 50/60 Hz input power, with a maximum 1.2 amp current draw. The power supply circuit must be protected with a 15 amp maximum circuit breaker.

12. Remove the knockout in the bottom of the pneumatic control box. Install a strain relief fitting (not included). Connect the power cord wires (L1, L2, GND) to the terminal block (Y). See FIG. 5.

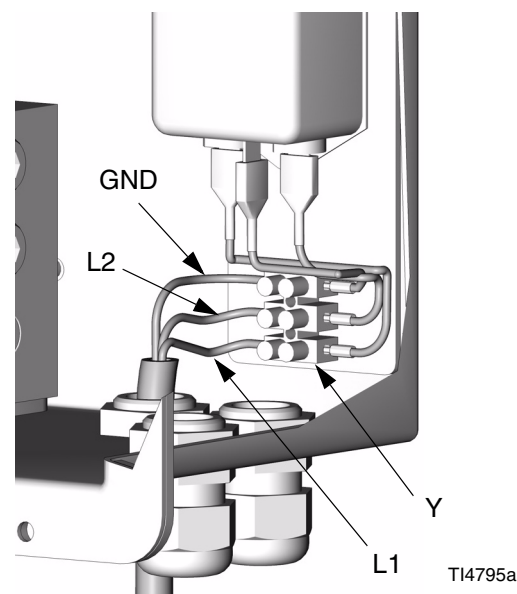
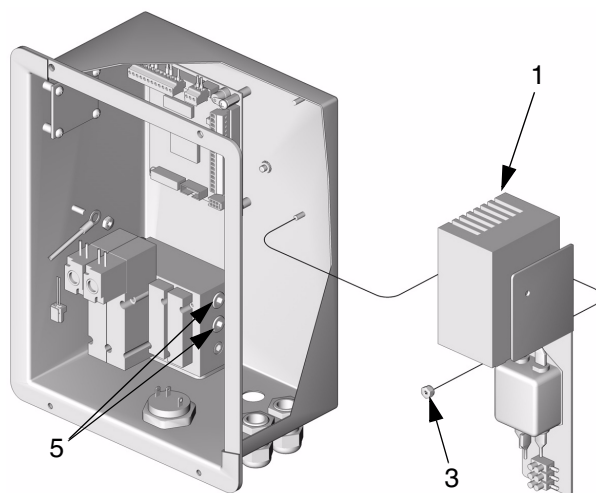


FIG. 5

13. Reassemble user interface (C) in reverse order. See FIG. 1.

Parts



TI5115a

Ref. No.	Part No.	Description	Qty
1	248628	POWER SUPPLY	1
2	103546	WIRE TIE	2
3	109466	NUT, lock, w/nylon insert; 8-32	1
4	15D891	WIRE HARNESS	1
5	100721	PLUG, pipe	2
6	111907	MOUNT, tie wrap	2

Graco Information

TO PLACE AN ORDER, contact your Graco distributor or call to identify the nearest distributor.

Phone: 612-623-6921 **or Toll Free:** 1-800-328-0211, **Fax:** 612-378-3505

*All written and visual data contained in this document reflects the latest product information available at the time of publication.
Graco reserves the right to make changes at any time without notice.*

Sales Office: Minneapolis

International Offices: Belgium, Korea, Hong Kong, Japan

GRACO INC. P.O. BOX 1441 MINNEAPOLIS, MN 55440-1441

www.graco.com

Printed in USA 310675A

5/2004