

Acid Catalyzed Flush Conversion

311205D

Converts ProMix™ II and ProMix Easy™ for acid catalyzed applications. For use with meter-based proportioners only.

4000 psi (27.6 MPa, 276 bar) Maximum Working Pressure



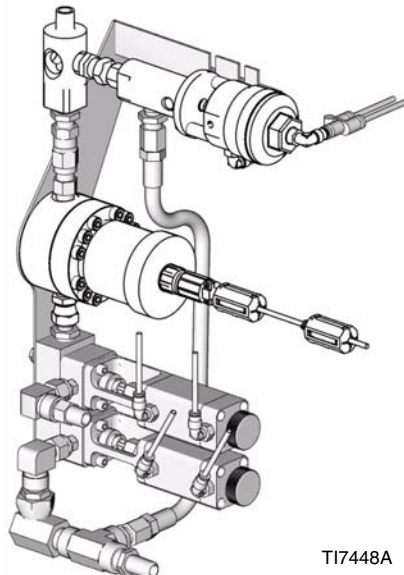
Important Safety Instructions

Read all warnings and instructions in this manual.
Save these instructions.

Part No. 249594 Kit, for ProMix™ II (see pages 2-7). Also see manual 310633 for complete user instructions and warnings.

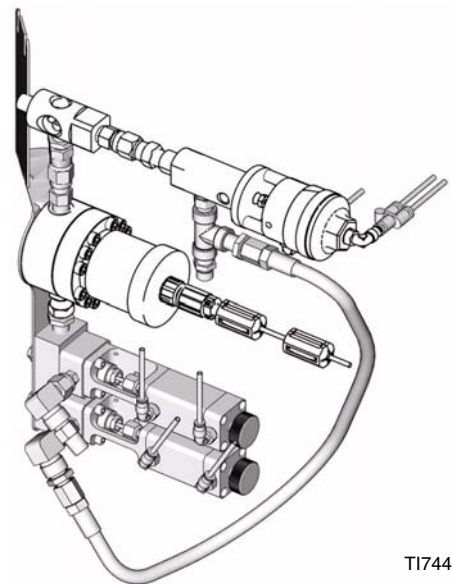
Part No. 249595 Kit, for ProMix Easy™ (see pages 8-15). Also see manual 309908 for complete user instructions and warnings.

249595 Kit, for ProMix Easy™



TI7448A




249594 Kit, for ProMix™ II



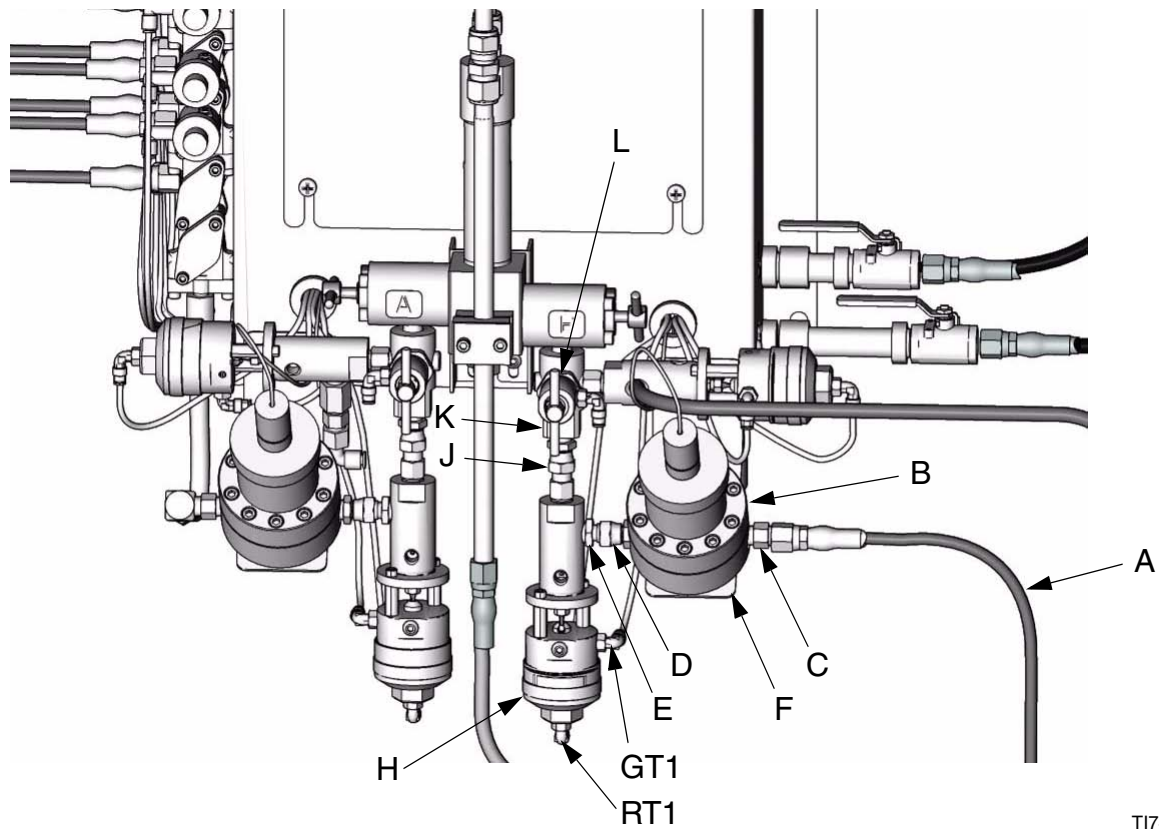
TI7449A

249594 Kit, for ProMix II

Disassembly

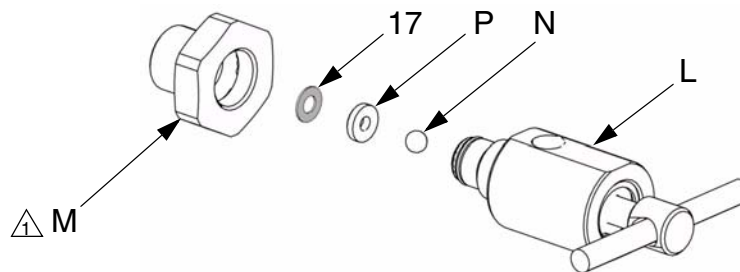
						
Before beginning, follow the Pressure Relief Procedure in the ProMix™ II manual 310633.						

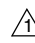
1. Relieve the pressure.
2. See FIG. 1. Disconnect the component B supply line (A) from the check valve (C) at the component B fluid meter (B). Unscrew the check valve (C) from the meter.
3. Unscrew the swivel (D) from the adapter (E) at the meter's fluid outlet.
4. Remove the screws holding the meter bracket (F) to the ProMix™ II, and holding the meter (B) to the bracket. Save these screws.
5. Disconnect the red (RT1) and green (GT1) tubing from the component B dispense valve (H).
6. Unscrew the swivel (J) from the dispense valve outlet and remove the dispense valve (H). The valve is not needed with this kit.
7. Remove the swivel (J) from the component B manifold housing (K).
8. Remove the old ball, old ball guide, and old o-ring. Replace with new ball (101750), new ball guide (15M580), and new o-ring (110135) included in Kit 249594. Follow Servicing Shutoff Valve instructions in manual 310654.
9. Remove the component B sampling valve (L) from the manifold housing (K).
10. See FIG. 2. Unscrew the housing nut (M) from the sampling valve body. Remove the old gasket and replace with a gasket (17) included in the kit.
11. Reinstall the housing nut (M), making sure the ball (N) and seat (P) are in place. Torque to 130-140 in-lb (14.7-15.8 N•m).
12. Reinstall the component B sampling valve (L) in the manifold housing (K).



TI7443A

FIG. 1. ProMix™ II Disassembly



 Torque to 130-140 in-lb (14.7-15.8 N•m).

TI7452A

FIG. 2. Replace Component B Sampling Valve Gasket

249594 Parts List

See FIG. 3.

Ref. No.	Part No.	Description	Qty.	Ref. No.	Part No.	Description	Qty.
1	166846	ADAPTER; 1/4 npsm x 1/4 npt (mbe)	3	15	112189	Y CONNECTOR; 5/32 in. (4 mm) OD tube	1
2	207123	ELBOW, swivel; 3/8 npt(m) x 3/8 npsm(f)	1	16	15G312	VALVE, control, timer	1
3	102901	TEE; 3/8 npt(f)	1	17	249592	KIT, gasket, sampling valve; package of 10	1
4	164856	NIPPLE, reducing; 3/8 npt x 1/4 npt	3	18	239108	HOSE, fluid; 1/4 npsm (fbe); 24 in. (600 mm) long; nylon	1
5	15G249	UNION, swivel; 1/4 npt (fbe)	1	19		TUBE; nylon; green; 5/32 in. (4 mm) OD	5 ft
6	15G315	MANIFOLD	1	20		TUBE; nylon; red; 5/32 in. (4 mm) OD	5 ft
7	236929	VALVE, supply	2	31	070522	SEALANT, anaerobic	1
8	111120	SCREW, cap, socket hd; M5 x 35	4	32	15M580	BUSHING, ball guide, sst	1
9	115222	ADAPTER; 1/8 bspt x 3/8 in. (10 mm) OD tube	2	33	101750	BALL, bearing, sst	1
10	115223	ELBOW; 1/4 npt(f) x 3/8 in. (10 mm) OD tube	2	34	110135	O-RING, PTFE	1
11	114151	ELBOW; 1/8 npt(m) x 5/32 in. (4 mm) OD tube	4				
12	501867	CHECK VALVE	2				
13	15G318	BRACKET, mounting	1				
14	114182	SCREW, machine, hex flange hd; M6 x 16	4				

Wetted Parts

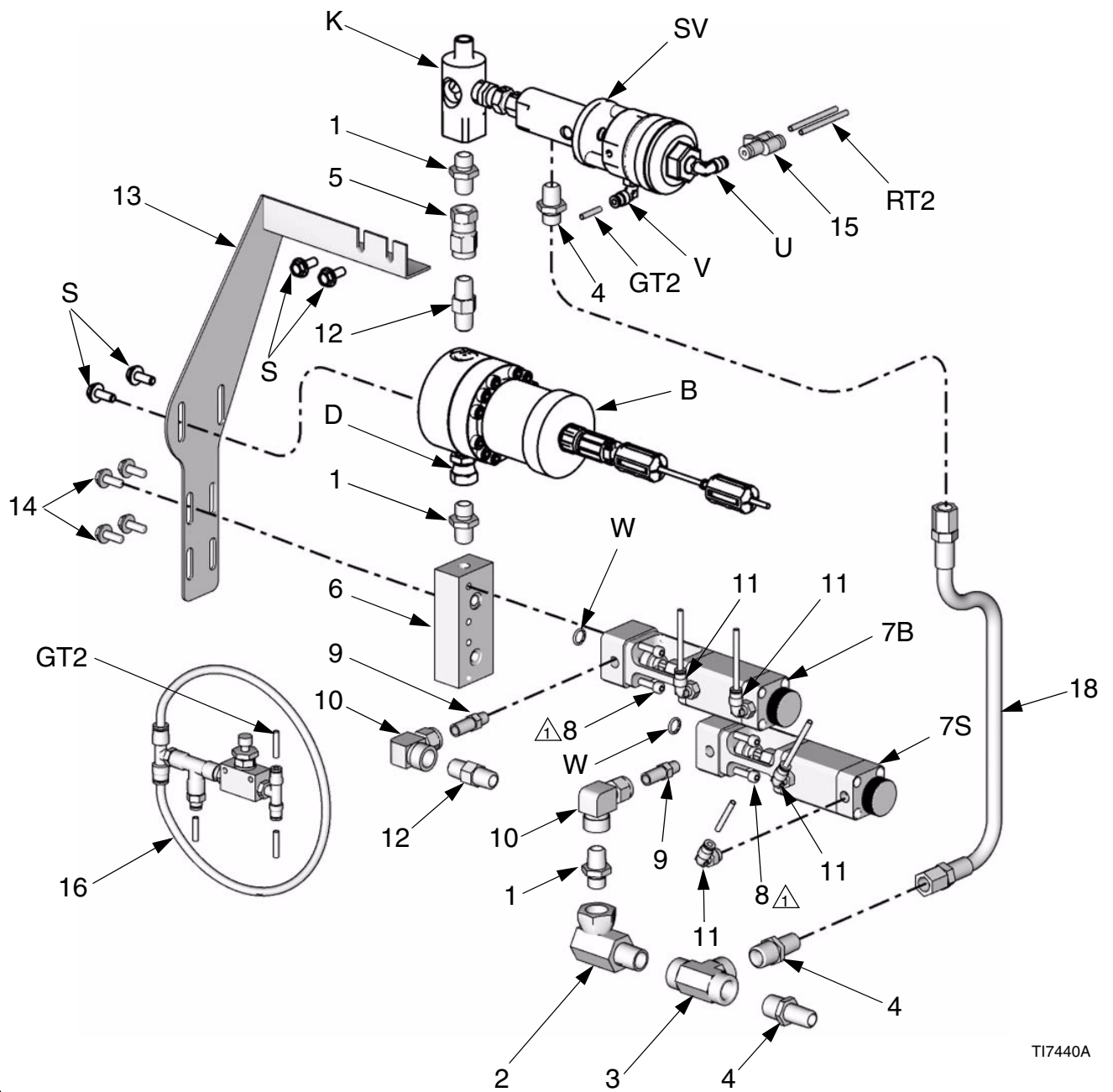
Stainless steel, PTFE, nylon, UHMWPE

Install Kit 249594



NOTE: Apply pipe sealant (31) to all tapered threads when installing kit. Do not apply sealant to swivel fittings.

- See FIG. 3. Install the bracket (13) securely onto the ProMix™ II, using two screws (S) removed from the old bracket.
- Install an adapter (1) in the bottom of the component B manifold housing (K).
- Install a reducing nipple (4) in the fluid inlet of the main solvent dispense valve (SV).
- Disconnect the red tube (RT2) from the CLOSE elbow (U) of the main solvent dispense valve (SV). Install the Y connector (15) in the elbow. Reconnect the red tube (RT2) to one side of the Y connector.
- Disconnect the green tube (GT2) from the OPEN elbow (V) of the main solvent dispense valve (SV) and connect it to the top right port of the timer control valve (16).
- Install an adapter (1) in the top of the manifold (6).
- Install the check valve (12) in the fluid outlet of the meter (B) so the arrow on the check valve is facing the same direction as the arrow on the meter. Install the swivel union (5) on the check valve.
- Screw the swivel (D) at the fluid inlet of the meter (B) onto the adapter (1) at the top of the manifold (6).

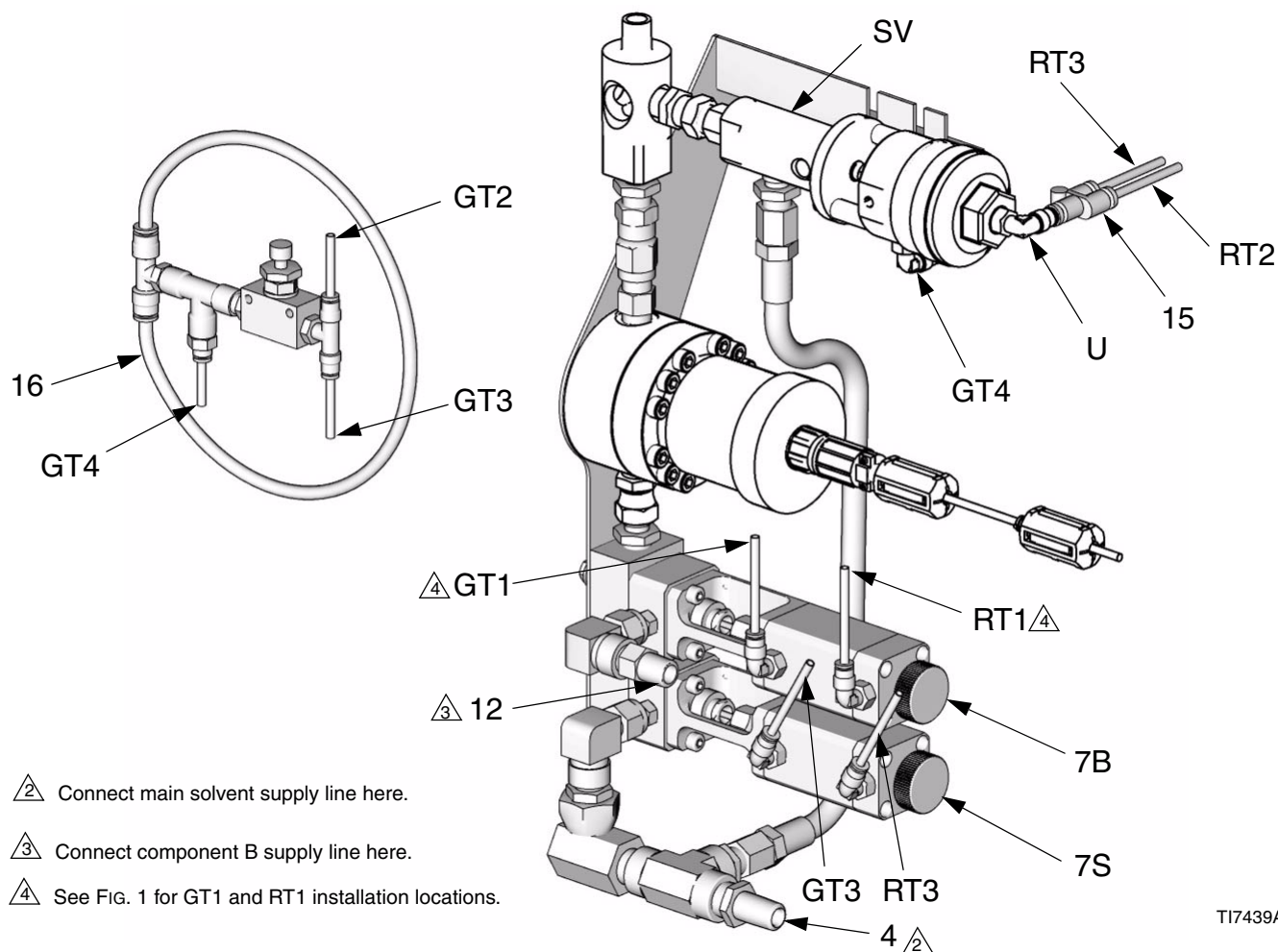


TI7440A

FIG. 3. Install Kit 249594

9. See FIG. 3. Connect the swivel (5) at the outlet of the meter (B) to the adapter (1) at the bottom of the manifold housing (K).
10. Align the meter (B) and manifold (6) mounting holes with the slots in the bracket (13). Secure with two screws (S) removed in **Disassembly** and the four screws (14) included in the kit.
11. Install an adapter (9) in the fluid inlet of each supply valve (7B, 7S).
12. Install elbows (11) in the OPEN and CLOSE ports of the two supply valves (7B, 7S). The elbows in one valve must be pointing vertical, and the elbows in the other valve must be angled slightly clockwise.
13. Check that the o-rings (W) in the base of each supply valve are in place. These o-rings provide a seal between the supply valves and the manifold (6).
14. Install the supply valve (7B) with the vertical elbows in the upper position on the manifold (6), using two screws (8). Torque to 102-106 in-lb (11.5-12.0 N•m).
This is the component B valve.
15. Install the supply valve (7S) with the angled elbows in the lower position on the manifold (6), using two screws (8). Torque to 102-106 in-lb (11.5-12.0 N•m).
This is the momentary solvent valve.
16. Install a tube elbow (10) and check valve (12) onto the adapter (9) of the component B valve (7B). The check valve arrow must point toward the tube elbow (10).
17. Assemble a tube elbow (10), adapter (1), swivel elbow (2), tee (3), and two reducing nipples (4) to the momentary solvent supply valve (7S).
18. Connect the hose (18) between the reducing nipple (4) at the inlet of the main solvent dispense valve (SV) and the nipple (4) at the branch of the tee (3).

19. See FIG. 4. Connect the green (GT1) and red (RT1) tubing removed in **Disassembly** to the OPEN and CLOSE elbows of the component B valve (7B).
20. Connect the red tubing (20) supplied in the kit to the CLOSE elbow (RT3) of the momentary solvent valve (7S) and to the unused port (RT3) of the Y connector (15).
21. Locate the timer control valve (16) close to the supply valves (7B and 7S). The timer control valve is supported by tubing (GT2, GT3, GT4). Delay timer dial is factory set for a 5 sec delay (approximately two full turns counterclockwise from fully closed).
22. Connect the green tubing (19) supplied in the kit to the OPEN elbow (GT3) of the momentary solvent valve (7S) and to the bottom right port (GT3) of the timer control valve (16). Cut to fit.
23. Connect the remaining green tubing (19) to the OPEN elbow (GT4) on the main solvent dispense valve (SV) and to the bottom left port (GT4) of the timer control valve (16).
24. Connect the solvent supply line to the nipple (4) at the tee (3).
25. Connect the component B supply line to the check valve (12) at the component B supply valve (7B).



TI7439A

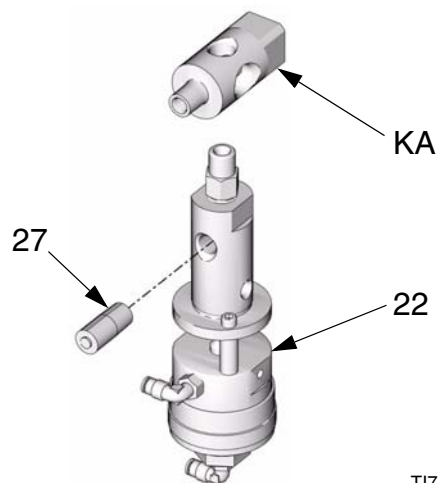
FIG. 4. Tubing Connections, ProMix™ II Kit 249594

249595 Kit, for ProMix Easy™

Disassembly

<p>Before beginning, follow the Pressure Relief Procedure in the ProMix Easy™ manual 309908.</p>						

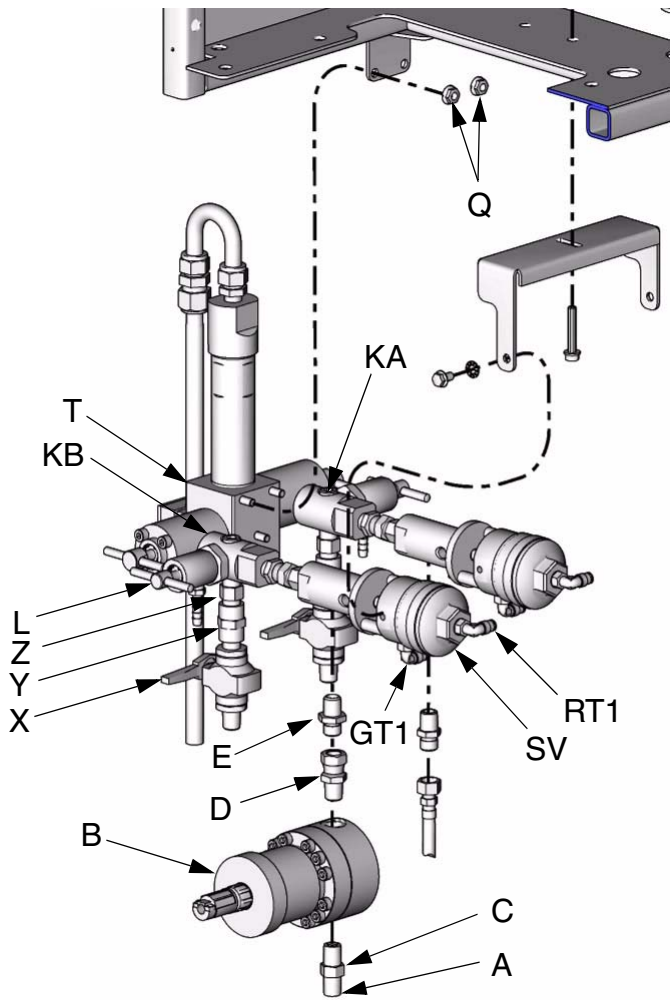
1. Relieve the pressure.
2. See FIG. 6. Disconnect the component B supply line (A) from the check valve (C) at the component B fluid meter (B). Unscrew the check valve (C) from the meter.
3. Unscrew the swivel (D) from the adapter (E) to disconnect the fluid meter (B) from the component B dispense valve (SV). Remove the adapter (D) from the dispense valve inlet.
4. Disconnect the red (RT1) and green (GT1) tubing from the component B dispense valve (SV). Do not reconnect the tubing yet. ***This dispense valve will now be the main solvent valve.***
5. Remove the ball valve (X), coupling (Y), and check valve (Z) from both manifold housings (KA, KB).
6. See FIG. 5. Remove the plug from the bottom of the component A manifold housing (KA). Install the dispense valve (22) in the manifold housing. Install the tube fitting (27) in the inlet of the dispense valve. ***This dispense valve will be an air purge valve for the A side.***
7. Remove the old ball, old ball guide, and old o-ring. Replace with new ball (101750), new ball guide (15M580), and new o-ring (110135) included in kit 249595. Follow Servicing Shutoff Valve instructions in manual 310654.



TI7451A

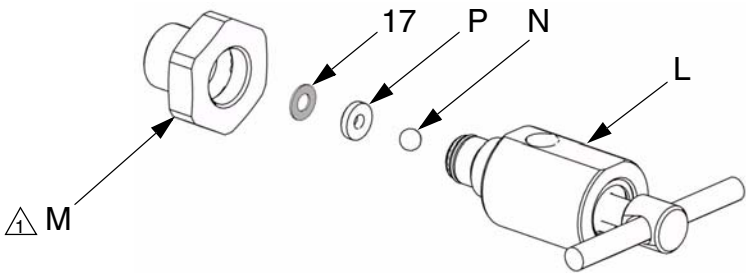
FIG. 5. Air Purge Valve (A Side)

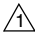
8. See FIG. 6. Remove the component B sampling valve (L) from the component B manifold housing (KB).
9. See FIG. 7. Unscrew the housing nut (M) from the sampling valve body. Remove the old gasket and replace with a gasket (17) included in the kit.
10. Reinstall the housing nut (M), making sure the ball (N) and seat (P) are in place. Torque to 130-140 in-lb (14.7-15.8 N•m).
11. Reinstall the component B sampling valve (L) in the manifold housing (KB).



TI7444A

FIG. 6. ProMix Easy™ Disassembly



 Torque to 130-140 in-lb (14.7-15.8 N•m).

TI7452A

FIG. 7. Replace Component B Sampling Valve Gasket

249595 Parts List

See FIG. 8.

Ref. No.	Part No.	Description	Qty.
1	166846	ADAPTER; 1/4 npsm x 1/4 npt (mbe)	5
3	110290	TEE; 1/4 npt(f)	1
4	C20482	NIPPLE; 1/4 npt	1
5	15G249	UNION, swivel; 1/4 npt (fbe)	1
6	15G315	MANIFOLD	1
7	236929	VALVE, supply	2
8	111120	SCREW, cap, socket hd; M5 x 35	4
9	115222	ADAPTER; 1/8 bspt x 3/8 in. (10 mm) OD tube	2
10	115223	ELBOW; 1/4 npt(f) x 3/8 in. (10 mm) OD tube	2
11	114151	ELBOW; 1/8 npt(m) x 5/32 in. (4 mm) OD tube	4
12	501867	CHECK VALVE	2
13	15H131	BRACKET, mounting	1
14	114182	SCREW, machine, hex flange hd; M6 x 16	4
15	112189	Y CONNECTOR; 5/32 in. (4 mm) OD tube	1
16	15G312	VALVE, control, timer	1
17	249592	KIT, gasket, sampling valve; package of 10	1
18	239108	HOSE, fluid; 1/4 npsm (fbe); 24 in. (600 mm) long; nylon	1
19		TUBE; nylon; green; 5/32 in. (4 mm) OD	20 ft

Ref. No.	Part No.	Description	Qty.
20		TUBE; nylon; red; 5/32 in. (4 mm) OD	20 ft
21	15E933	CONTROL BOX, auto flush	1
22	287222	DISPENSE VALVE; see manual 310655	1
23		TUBE; polyethylene; natural; 1/4 in. (6 mm) OD	10 ft
24		TUBE; nylon; white; 5/32 in. (4 mm) OD	30 ft
25	599246	TEE, tube; 1/4 npt(m) x 1/4 in. (6 mm) OD tube	1
26	100206	BUSHING, pipe; 1/2 npt(m) x 1/4 npt(f)	1
27	104165	FITTING, tube; 1/4 npt(m) x 1/4 in. (6 mm) OD tube	1
28	517312	ADAPTER, tube; 1/4 in. (6 mm) OD tube x 5/32 in. (4 mm) OD tube	1
29	158491	NIPPLE; 1/2 npt	1
30	103475	TEE, pipe; 1/2 npt(f)	1
31	070522	SEALANT, anaerobic	1
32	15M580	BUSHING, ball guide, sst	1
33	101750	BALL, bearing, sst	1
34	110135	O-RING, PTFE	1

Wetted Parts

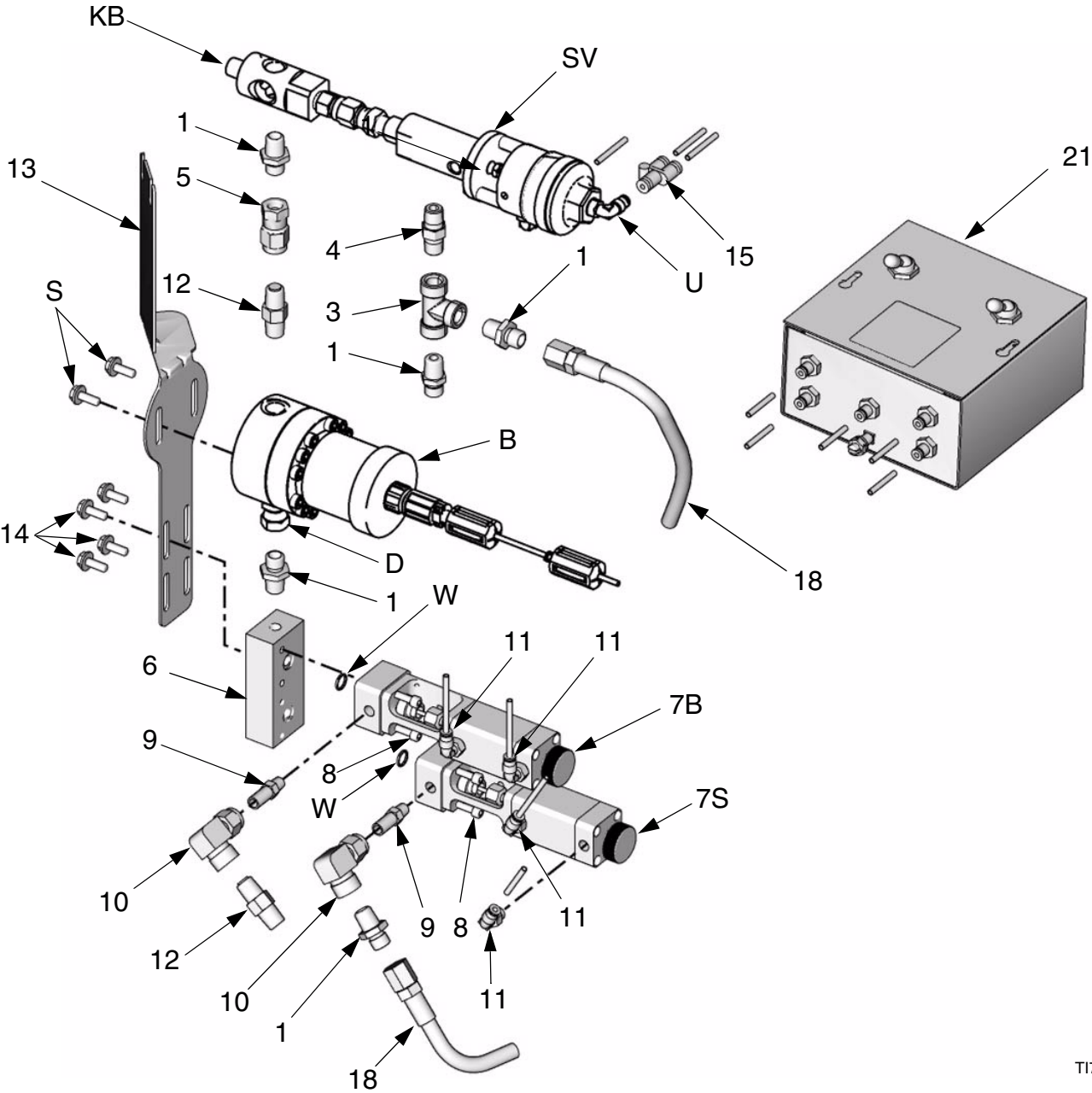
Stainless steel, PTFE, nylon, UHMWPE

Install Kit 249595



NOTE: Apply pipe sealant (31) to all tapered threads when installing kit. Do not apply sealant to swivel fittings.

- See FIG. 6. Loosen the two nuts (Q) holding the fluid manifold (T) to the ProMix Easy™ frame. Install the bracket (13, FIG. 8) onto the frame mounting studs and retighten the nuts.
- See FIG. 8. Install an adapter (1) in the bottom of the component B manifold housing (KB).
- Install a nipple (4), tee (3), and two adapters (1) in the fluid inlet of the main solvent dispense valve (SV).
- Install the Y connector (15) in the CLOSE elbow (U) of the main solvent dispense valve (SV).
- Install an adapter (1) in the top of the manifold (6).
- Install the check valve (12) in the fluid outlet of the meter (B) so the arrow on the check valve is facing the same direction as the arrow on the meter. Install the swivel union (5) on the check valve.
- Screw the swivel (D) at the fluid inlet of the meter (B) onto the adapter (1) at the top of the manifold (6).
- Connect the swivel (5) at the outlet of the meter (B) to the adapter (1) at the bottom of the manifold housing (KB).



TI7442A

FIG. 8. Install Kit 249595

9. Align the meter (B) and manifold (6) mounting holes with the slots in the bracket (13). Secure with the two screws (S) included with the meter and the four screws (14) included in the kit.
10. Install an adapter (9) in the fluid inlet of each supply valve (7B, 7S).
11. Install elbows (11) in the OPEN and CLOSE ports of the two supply valves (7B, 7S).
12. Check that the o-rings (W) in the base of each supply valve are in place. These o-rings provide a seal between the supply valves and the manifold (6).
13. Install one supply valve (7B) in the upper position on the manifold (6), using two screws (8). Torque to 102-106 in-lb (11.5-12.0 N•m). **This is the component B valve.**
14. Install the other supply valve (7S) in the lower position on the manifold (6), using two screws (8). Torque to 102-106 in-lb (11.5-12.0 N•m). **This is the momentary solvent valve.**
15. Install a tube elbow (10) and check valve (12) onto the adapter (9) of the component B valve (7B). The check valve arrow must point toward the tube elbow (10).
16. Assemble a tube elbow (10) and adapter (1) onto the adapter (9) of the momentary solvent supply valve (7S).
17. Connect the hose (18) between the adapter (1) at the momentary solvent supply valve (7S) and the adapter (1) in the branch of the tee (3) at the main solvent dispense valve (SV).
18. Remove the back plate of the ProMix Easy™. Disconnect the hose (AA) from the swivel elbow (AB). See FIG. 9.
19. Assemble the nipple (29), tee (30), bushing (26), tube tee (25), tube adapter (28), and hose (AA), then connect the assembly to the swivel elbow (AB).
20. Place the timer control valve (16) inside the ProMix Easy™ cabinet. Delay timer dial is factory set for a 5 sec delay (approximately two full turns counterclockwise from fully closed).

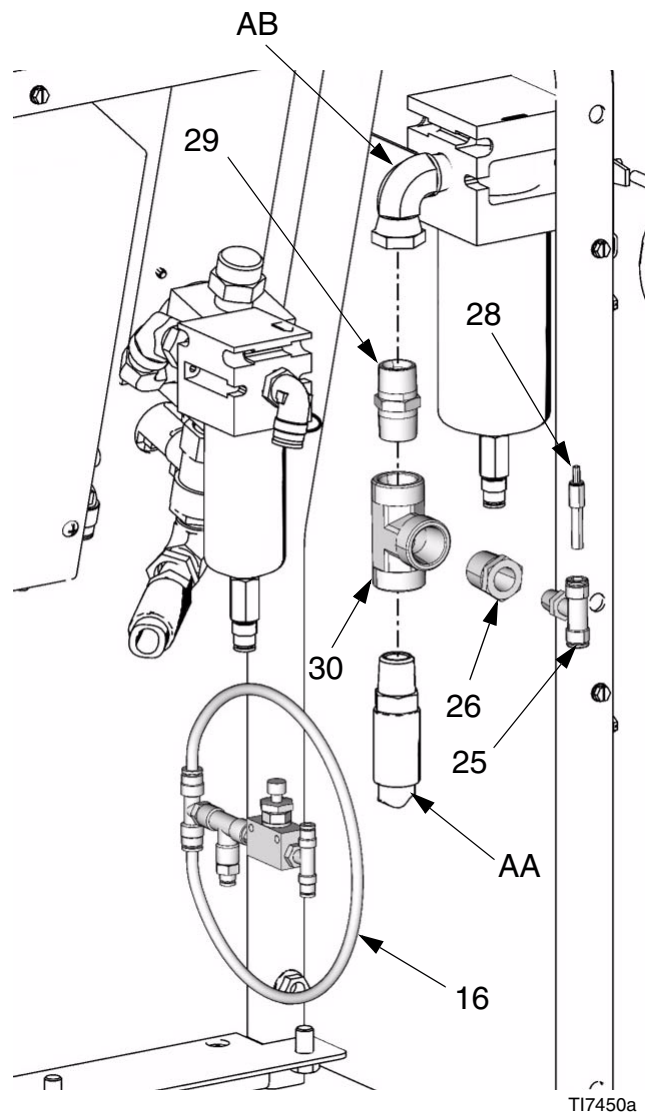
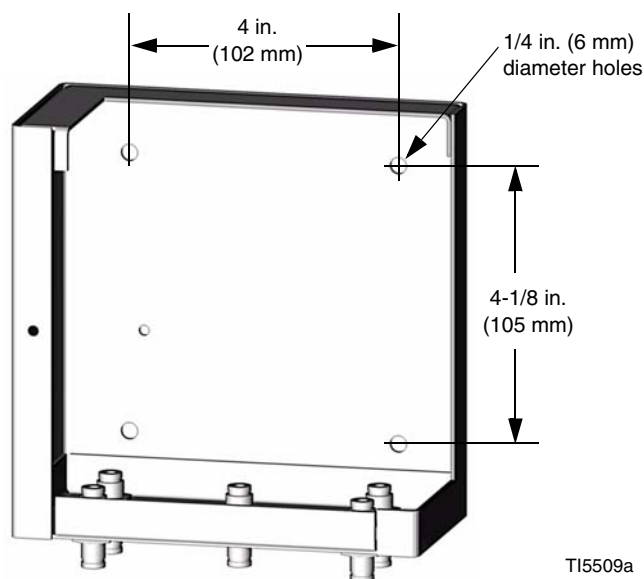


FIG. 9. Inside ProMix Easy™ Cabinet

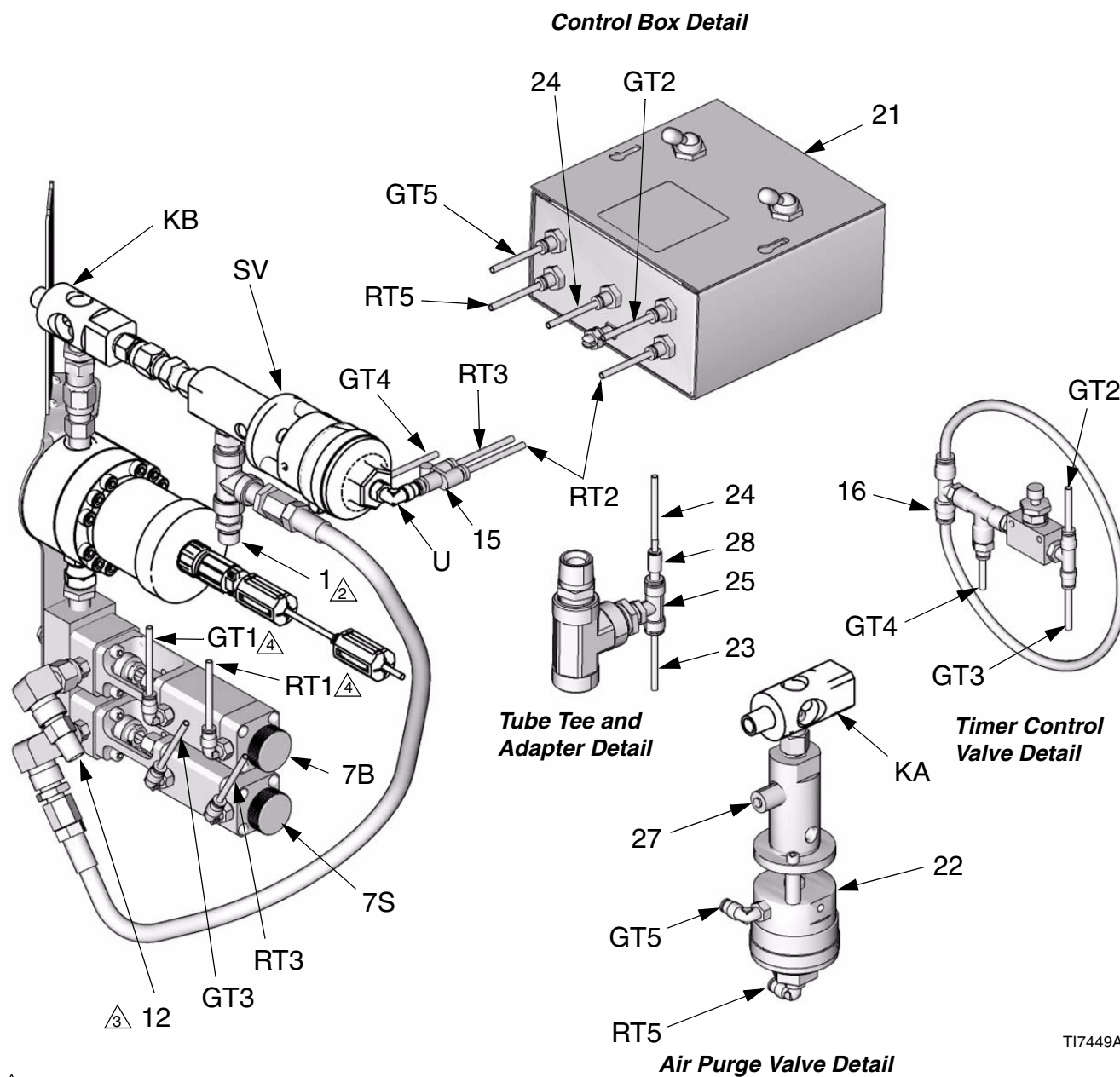
21. See FIG. 10. Install the control box (21) close to the location of the ProMix Easy™. Tubing must reach from the control box to the ProMix Easy™.



T15509a

FIG. 10. Control Box Mounting Diagram




22. See FIG. 11. Connect 1/4 in. (6 mm) OD tubing (23) from the tube tee (25) to the tube fitting (27) at the inlet of the air purge dispense valve (22).
23. Connect 5/32 in. (4 mm) OD white tubing (24) from the tube adapter (28) to the middle connector on the bottom of the control box (21).
24. Connect the green (GT1) and red (RT1) tubing removed in **Disassembly** to the OPEN and CLOSE elbows of the component B valve (7B).
25. Connect the red tubing (20) supplied in the kit to one port (RT2) of the Y connector (15) and to the right rear connector (RT2) on the bottom of the control box (21). Cut to fit.
26. Connect another length of red tubing (20) to the CLOSE elbow (RT3) of the momentary solvent valve (7S) and to the other port (RT3) of the Y connector (15).
27. Connect the remaining red tubing (20) from the air purge valve (22) CLOSE elbow (RT5) to the left rear connector (RT5) on the bottom of the control box (21).
28. Connect the green tubing (19) supplied in the kit to the top right port (GT2) of the timer control valve (16) and to the right front connector (GT2) on the bottom of the control box (21). Cut to fit.
29. Connect another length of green tubing (19) to the OPEN elbow (GT3) of the momentary solvent valve (7S) and to the bottom right port (GT3) of the timer control valve (16). Cut to fit.
30. Connect another length of green tubing (19) to the OPEN elbow (GT4) of the main solvent dispense valve (SV) and to the bottom left port (GT4) of the timer control valve (16). Cut to fit.
31. Connect the remaining green tubing (19) from the air purge valve (22) OPEN elbow (GT5) to the left front connector (GT5) on the bottom of the control box (21).
32. Connect the solvent supply line to the adapter (1) at the main solvent dispense valve (SV).
33. Connect the component B supply line to the check valve (12) at the component B supply valve (7B).






TI7449A

FIG. 11. Tubing Connections, ProMix Easy™ Kit 249595

Control Box Operation (ProMix Easy™ Kit 249595)

						
Read warnings in the ProMix Easy™ manual 309908. Flush only in a well ventilated area.						

						
Before flushing, follow the Pressure Relief Procedure in the ProMix Easy™ manual 309908.						

1. Press Stop button to shut off ProMix Easy™.
2. Relieve pressure. Engage trigger lock. Remove spray tip.
3. Turn on solvent pump. Adjust solvent pump regulator to desired pressure; use lowest pressure possible. Do not exceed the working pressure of the component with the lowest pressure rating.
4. Turn control box component A ON/OFF switch ON.



NOTE: Component A and component B sides can be flushed simultaneously, if desired.

NOTE: Gun must be triggered before activating B side.

5. Disengage trigger lock and trigger gun into a grounded pail. Flush out about 1 pint (500 cc) of mixed material. Engage trigger lock. Turn control box component A ON/OFF switch OFF.
6. Turn control box component B ON/OFF switch ON.
7. Disengage trigger lock and trigger gun into a grounded pail. Flush out about 1 pint (500 cc) of mixed material. Engage trigger lock.
8. Turn control box component A ON/OFF switch ON.
9. Disengage trigger lock, and flush through gun until clean solvent flows. Engage trigger lock.



NOTE: Length of flush varies by application and material.

10. Turn both control box ON/OFF switches OFF.
11. Trigger gun to relieve solvent pressure. Engage trigger lock.

Graco Standard Warranty

Graco warrants all equipment referenced in this document which is manufactured by Graco and bearing its name to be free from defects in material and workmanship on the date of sale to the original purchaser for use. With the exception of any special, extended, or limited warranty published by Graco, Graco will, for a period of twelve months from the date of sale, repair or replace any part of the equipment determined by Graco to be defective. This warranty applies only when the equipment is installed, operated and maintained in accordance with Graco's written recommendations.

This warranty does not cover, and Graco shall not be liable for general wear and tear, or any malfunction, damage or wear caused by faulty installation, misapplication, abrasion, corrosion, inadequate or improper maintenance, negligence, accident, tampering, or substitution of non-Graco component parts. Nor shall Graco be liable for malfunction, damage or wear caused by the incompatibility of Graco equipment with structures, accessories, equipment or materials not supplied by Graco, or the improper design, manufacture, installation, operation or maintenance of structures, accessories, equipment or materials not supplied by Graco.

This warranty is conditioned upon the prepaid return of the equipment claimed to be defective to an authorized Graco distributor for verification of the claimed defect. If the claimed defect is verified, Graco will repair or replace free of charge any defective parts. The equipment will be returned to the original purchaser transportation prepaid. If inspection of the equipment does not disclose any defect in material or workmanship, repairs will be made at a reasonable charge, which charges may include the costs of parts, labor, and transportation.

THIS WARRANTY IS EXCLUSIVE, AND IS IN LIEU OF ANY OTHER WARRANTIES, EXPRESS OR IMPLIED, INCLUDING BUT NOT LIMITED TO WARRANTY OF MERCHANTABILITY OR WARRANTY OF FITNESS FOR A PARTICULAR PURPOSE.

Graco's sole obligation and buyer's sole remedy for any breach of warranty shall be as set forth above. The buyer agrees that no other remedy (including, but not limited to, incidental or consequential damages for lost profits, lost sales, injury to person or property, or any other incidental or consequential loss) shall be available. Any action for breach of warranty must be brought within two (2) years of the date of sale.

GRACO MAKES NO WARRANTY, AND DISCLAIMS ALL IMPLIED WARRANTIES OF MERCHANTABILITY AND FITNESS FOR A PARTICULAR PURPOSE, IN CONNECTION WITH ACCESSORIES, EQUIPMENT, MATERIALS OR COMPONENTS SOLD BUT NOT MANUFACTURED BY GRACO. These items sold, but not manufactured by Graco (such as electric motors, switches, hose, etc.), are subject to the warranty, if any, of their manufacturer. Graco will provide purchaser with reasonable assistance in making any claim for breach of these warranties.

In no event will Graco be liable for indirect, incidental, special or consequential damages resulting from Graco supplying equipment hereunder, or the furnishing, performance, or use of any products or other goods sold hereto, whether due to a breach of contract, breach of warranty, the negligence of Graco, or otherwise.

FOR GRACO CANADA CUSTOMERS

The Parties acknowledge that they have required that the present document, as well as all documents, notices and legal proceedings entered into, given or instituted pursuant hereto or relating directly or indirectly hereto, be drawn up in English. Les parties reconnaissent avoir convenu que la rédaction du présente document sera en Anglais, ainsi que tous documents, avis et procédures judiciaires exécutés, donnés ou intentés, à la suite de ou en rapport, directement ou indirectement, avec les procédures concernées.

Graco Information

TO PLACE AN ORDER, contact your Graco distributor or call to identify the nearest distributor.

Phone: 612-623-6921 **or Toll Free:** 1-800-328-0211, **Fax:** 612-378-3505

*All written and visual data contained in this document reflects the latest product information available at the time of publication.
Graco reserves the right to make changes at any time without notice.*

This manual contains English. MM 311205

Graco Headquarters: Minneapolis
International Offices: Belgium, China, Japan, Korea

GRACO INC. P.O. BOX 1441 MINNEAPOLIS, MN 55440-1441

Copyright 2005, Graco Inc. is registered to ISO 9001

www.graco.com

Revised 2/2009